



Cover plate not included.

APPLICATIONS

Ideal for building façades, sign lighting and wall washing in both commercial and industrial applications.

SPECIFICATIONS

Construction

Precision die cast aluminum housing with clear tempered glass lens. Superior heat sink design with air-flow fins on the top and bottom to maximize fixture life.

LED configuration

Each unit has one high efficiency Chip on Board (COB) that delivers minimum 2,300 lumens. The LEDs have a color temperature of 5000K as standard. 4000K, 3000K also available. The CRI is greater than 70 and the operating temperature range is -40°C to +40°C.

Beam Distribution

NEMA 6HX 6V (wide) is standard. NEMA 3HX 3V (narrow) is available as an option.

Electrical

Total system wattage of the unit is 20W. The standard unit has a high efficiency driver that operates at 120 - 277V.

Mounting

Standard unit is available with two mounting options:
- Knuckle mount - 1/2" NPT knuckle. Round cover for 4" octagon box sold separately.
- Yoke mount - 3.64" deep yoke with watertight connector.

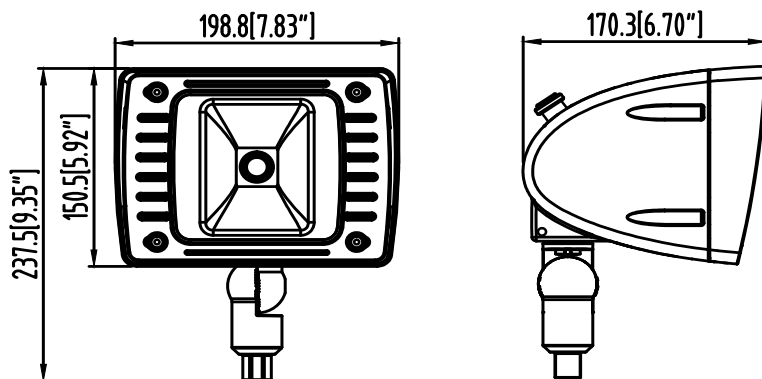
Finish

Standard finish is Bronze. Please consult factory for custom color.

Accessories

Visor, Polycarbonate lens, Wire Guard, Photocell, Phillips Dynadimmer. Phillips Dynadimmer dims the fixture to 25% for 6 hours instead of operating at 100% at all times.

DIMENSIONS



Project	
Type	
Date	
Notes	

Watts	20W
Lumens	min. 2,300
Efficacy	min. 115 lumens per watt

Operating Temperature	-40°C to +40°C
Certification	cULus, IP65
Warranty	5 Years
Color Temperature	5000K (standard) 4000K (option) 3000K (option)
LED life	100,000 hours
Effective Projected Area (EPA Rating)	0.35 sq ft
Total Harmonic Distortion	10%
Power Factor	0.982



With Optional Narrow Beam (3X3)

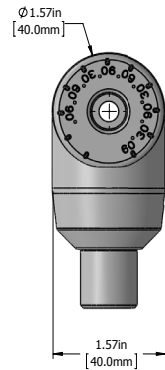
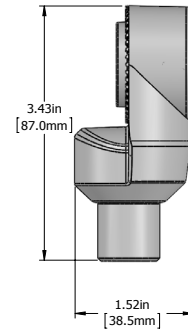
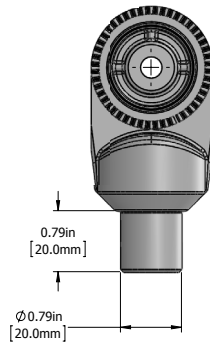


MOUNTING OPTIONS

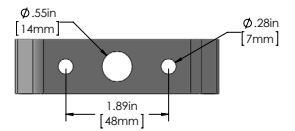
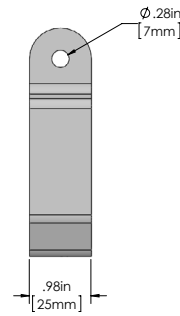
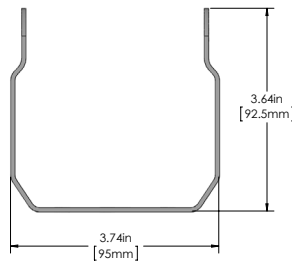
Knuckle, Yoke mount



Knuckle

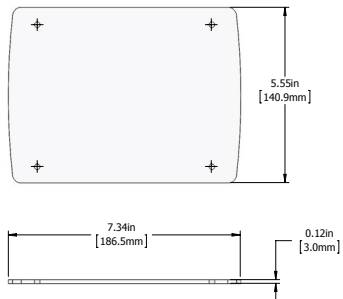


Yoke

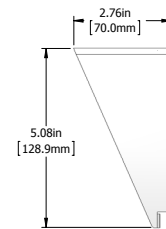
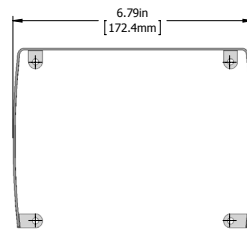
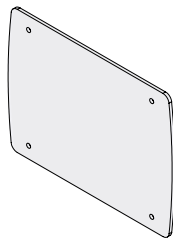


ACCESSORIES

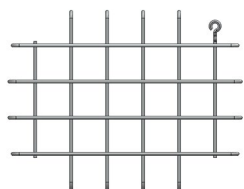
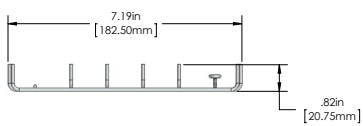
Polycarbonate lens, Wire guard, Visor



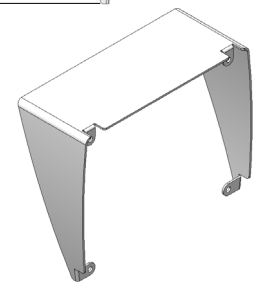
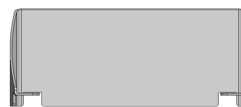
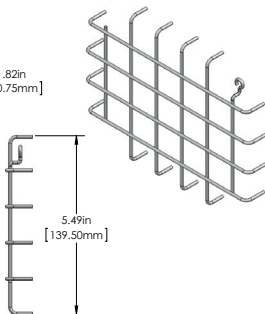
Polycarbonate lens



Visor



Wire Guard



ORDERING GUIDE

RFL1	LED20						
		VOLTAGE	COLOR TEMP	BEAM	FINISH	MOUNTING	OPTIONS
		B - 120 - 277V* A - 120V F - 277V	5K - 5000K* 4K - 4000K 3K - 3000K	W - Wide (6X6)* N - Narrow (3X3)	BRZ - BRONZE* CC - CUSTOM COLOR	YK - Yoke* KN - Knuckle*	V - Visor WG - Wire Guard PCL - Polycarbonate Lens PC - Photocell

* Standard configuration