

## INSTALLATION INSTRUCTIONS



### ELECTRICAL SHOCK HAZARD

**READ, UNDERSTAND, and FOLLOW** these instructions before installing the equipment.

### WARNING

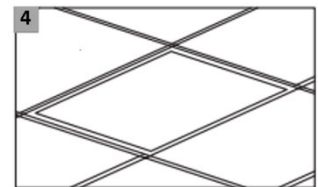
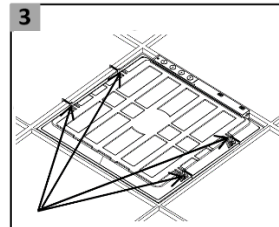
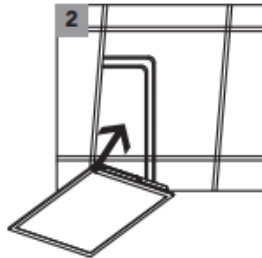
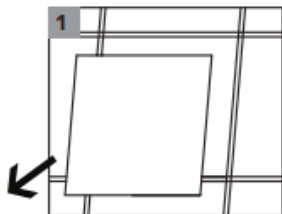
Disconnect the Electrical supply power at the service panel (fuse or circuit breaker box). Failure to do so could result in serious injury or death. Only qualified electricians should install this fixture and the installation MUST conform to the Canadian Electrical Code Part I and all local codes and ordinances. Ensure that only proper tools, materials, and equipment are used to complete the installation.

### SAFETY

- Proper grounding is required to ensure personal safety.
- Fixture should be mounted in locations where unauthorized personnel will not readily subject it to tampering.
- Do not use this equipment for anything other than its intended purpose.
- Servicing this equipment should be performed by qualified service personnel.
- Save these instructions.

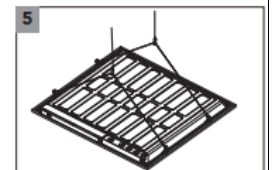
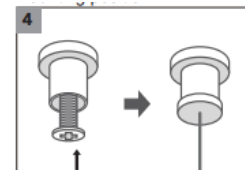
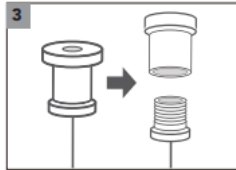
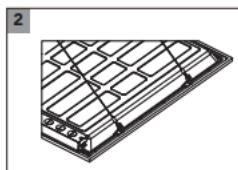
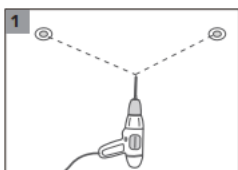
### INSTALLATION FLUSH CEILING MOUNT

- Remove the grid tile from the ceiling.
- Lift the fixture to the ceiling and make appropriate wiring connections as per the wiring diagram.
- Optional: Adjust the Wattage/Lumen and CCT select switches as desired.
- Slide the fixture into the ceiling grid and attach the T-Bar mounting clips by bending them over the grid rails.



### INSTALLATION 2 CABLE PENDANT MOUNT (optional purchase of accessories)

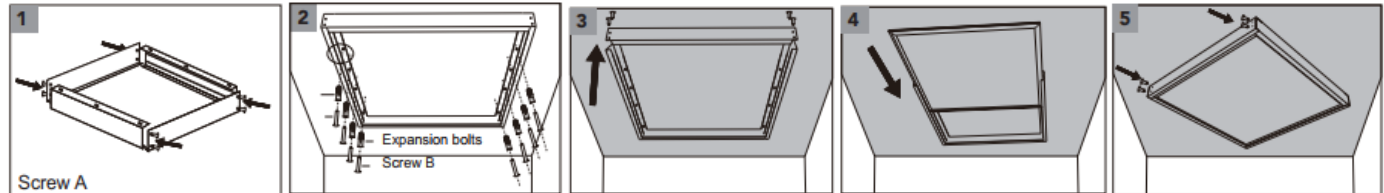
- Drill 2 mounting holes to the ceiling, with the holes being spaced according to the size of the panel light. Use appropriate screw securing method (for given ceiling material) to secure the female part of the rope grab device to the ceiling by drilling the self tapping screw into mounting holes.
- Ensure wire is secured with male part of the rope grab device. Screw the male part of the rope grab device into the female part.
- Connect wire hooks to the panel light by placing them through the small holes in the T-Bar mounting clips.



## INSTALLATION INSTRUCTIONS

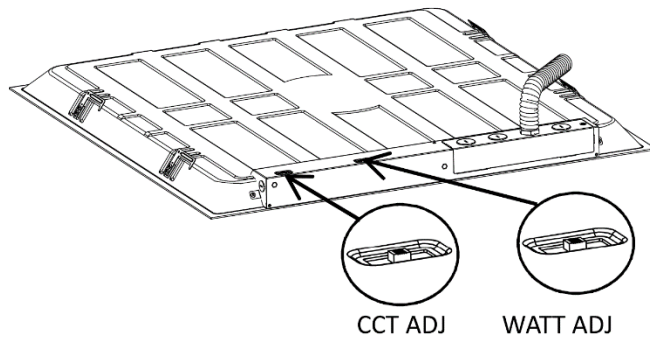
### INSTALLATION SURFACE MOUNT (optional purchase of accessories)

- Assemble the four frames with smaller screw to create square the size of the panel light.
- Fix the square made of four frames to the ceiling with larger screw.
- Demount one side of the frame to make room for panel light.
- Put the panel into the square frame.
- Put the previously removed piece of frame back in place using the smaller screw.



### CCT & LUMEN SELECTABLE SWITCHES

- CCT selectable switch is accessed behind the luminaire. Can switch between multiple CCT settings. 4000K is default.
- Lumen selectable switch is also accessed behind luminaire. Can switch the lumen intensity. Lumens vary depending on Luminaire model. Max lumen setting is default.



### WIRING

- Check that the line voltage is correct.
- Connect fixture **GROUND** (green) wire to power supply **GROUND** (green) wire.
- Connect fixture **WHITE** wire to power supply **NEUTRAL** wire.
- Connect fixture **BLACK with LABEL** wire to power supply **LINE** wire
- The fixture includes 0-10V dimming functionality, connect **PINK** and **VIOLET** wires to the dimming controller.
- The fixture includes a 12V auxiliary wire. If desired, remove the end caps from the **BLACK without LABEL** wire and connect them to a device.

