

INSTALLATION INSTRUCTIONS



ELECTRICAL SHOCK HAZARD

READ, UNDERSTAND, and FOLLOW these instructions before installing the equipment.

WARNING

Disconnect the Electrical supply power at the service panel (fuse or circuit breaker box). Failure to do so could result in serious injury or death. Only qualified electricians should install this fixture and the installation **MUST** conform to the Electrical Code and all local codes and ordinances. Ensure that only proper tools, materials, and equipment are used to complete the installation.

SAFETY

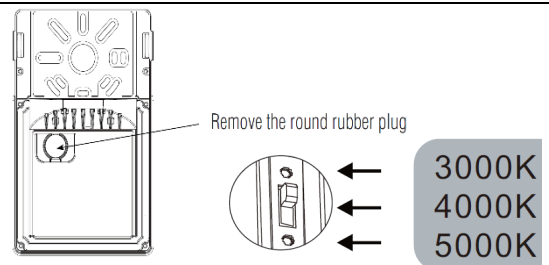
- Proper grounding is required to ensure personal safety.
- Fixture should be mounted in locations where unauthorized personnel will not readily subject it to tampering.
- Do not use this equipment for anything other than its intended purpose.
- Servicing this equipment should be performed by qualified service personnel.
- Save these instructions.
- This equipment has been tested and found to comply with the limits for a Class B digital device, pursuant to part 15 of the FCC Rules. These limits are designed to provide reasonable protection against harmful interference in a residential installation. This equipment generates, uses and can radiate radio frequency energy and, if not installed and used in accordance with the instructions, may cause harmful interference to radio communications.
- Changes or modifications to this unit not expressly approved by the party responsible for compliance Could void the user authority to operate the equipment.
- **MIN 90 °C SUPPLY CONDUCTOR**

Tools Required:

- Screwdriver and Drilling tools.

CCT SELECTABLE SWITCHES

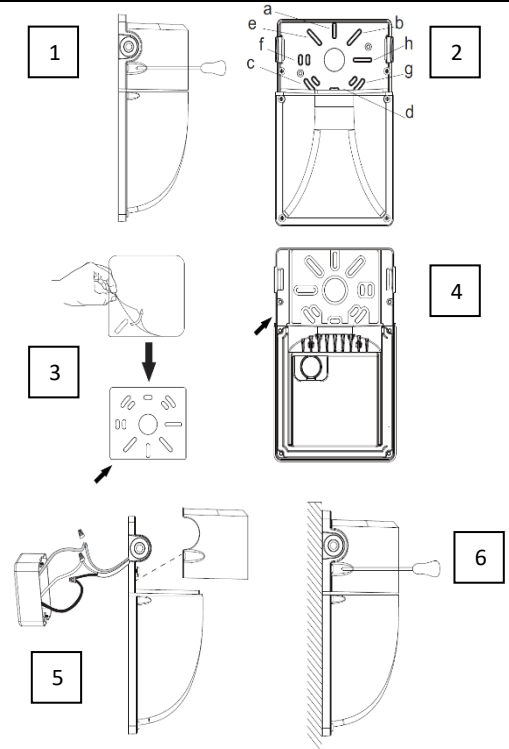
- CCT selectable switch is included in every luminaire. It is accessed by removing the round rubber plug located behind the fixture. The switch can be set to 3000K, 4000K, and 5000K CCT.



INSTALLATION INSTRUCTIONS

INSTALLATION

- Remove the Front cover by removing the 2 screws securing it to the rear housing [1].
- Knock out appropriate holes as needed, labelled “a” to “h” indicating the mounting hole position [2].
- Peel the rubber paper off the gasket and paste it on to the back of the rear housing [3].
- Fasten the rear housing to the junction box using the screws onto the junction box [4].
- Make appropriate wiring connections as per wiring diagram [5].
- Apply silicone caulking around back edges of the fixture to ensure tight seal.
- Reattach the front cover to the fixture [6].



DISCONNECTING PHOTOCELL

- Remove the Front cover by removing the 2 screws securing it to the rear housing.
- Unplug the photocell using the quick disconnect clip behind driver

WIRING

- Check that the line voltage is correct.
- Connect fixture **GROUND** (green) wire to power supply **GROUND** (green) wire.
- Connect fixture **WHITE** wire to power supply **NEUTRAL** wire.
- Connect fixture **BLACK** wire to power supply **LINE** wire
- The fixture includes 0-10V dimming functionality, connect **GREY** or **PINK** and **VIOLET** wires to a 0-10V dimming controller (optional).

