

## INSTALLATION INSTRUCTIONS



**ELECTRICAL SHOCK HAZARD**

**READ, UNDERSTAND, and FOLLOW** these instructions before installing the equipment.

### WARNING

Disconnect the Electrical supply power at the service panel (fuse or circuit breaker box). Failure to do so could result in serious injury or death. Only qualified electricians should install this fixture and the installation MUST conform to the Electrical Code and all local codes and ordinances. Ensure that only proper tools, materials, and equipment are used to complete the installation.

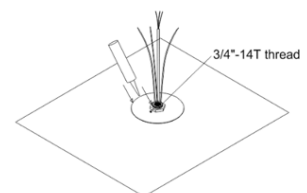
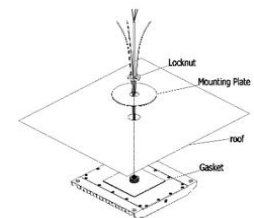
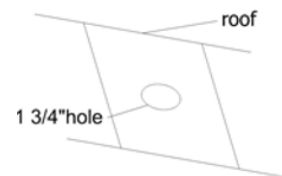
### SAFETY

- Proper grounding is required to ensure personal safety.
- Fixture should be mounted in locations where unauthorized personnel will not readily subject it to tampering.
- Do not use this equipment for anything other than its intended purpose.
- Servicing of this equipment should be performed by qualified service personnel.
- Save these instructions.
- This equipment has been tested and found to comply with the limits for a Class B digital device, pursuant to part 15 of the FCC Rules. These limits are designed to provide reasonable protection against harmful interference in a residential installation. This equipment generates, uses and can radiate radio frequency energy and, if not installed and used in accordance with the instructions, may cause harmful interference to radio communications.
- Changes or modifications to this unit not expressly approved by the party responsible for compliance Could void the user authority to operate the equipment.
- **MIN 105 °C SUPPLY CONDUCTOR**

## INSTALLATION

### Mount Throughout the Roof

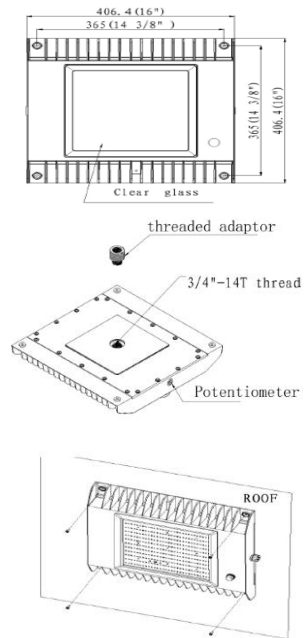
1. Use an existing hole on the roof or open a 1 3/4" hole.
2. Put the back thread through the hole, secure it by the gasket, plate, and hex head locknut. Make sure there is no gap between the plate and roof.
3. Fasten the small screw on the side of the locknut to prevent it from loosening. If the mounting surface is not flat, sealant should be applied surrounding the plate and each screw.
4. Use a 3/4" conduit to lead out the wires. Make appropriate wiring connections as per wiring diagram.



**INSTALLATION INSTRUCTIONS**

**Surface Mount on Junction Box**

1. Drill holes on the roof according to the dimensions.
2. Remove the threaded adaptor from the back of fixture.
3. Make appropriate wiring connections as per wiring diagram.
4. Secure the fixture to the roof using four screws.



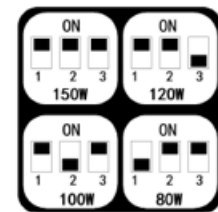
**Surface Mount without a Junction Box**

1. Remove the threaded adaptor from the back of fixture. Drill holes on the roof according to the dimensions.
2. Open the back plate first. Pull the wires back and throughout from the 1/2" NPT threaded hole. Secure the fixture to the roof with four screws.
3. Make appropriate wiring connections.
4. Proper sealant should be applied surrounding the 1/2" hole.

**Lumen Selectable Switches:**

Lumens may be selected using wattage adjustable switch installed on housing. Refer to the spec sheet to know the lumens for each wattage. See the table below for switch settings for 150W, 120W, 100W and 80W.

	1	2	3
<b>150W</b>	ON	ON	ON
<b>120W</b>	ON	ON	OFF
<b>100W</b>	ON	OFF	ON
<b>80W</b>	OFF	ON	ON



**WIRING**

- Check that the line voltage is correct.
- Connect fixture **GROUND** (green) wire to power supply **GROUND** (green) wire.
- Connect fixture **WHITE** wire to power supply **NEUTRAL** wire.
- Connect fixture **BLACK** wire to power supply **LINE** wire.
- The fixture includes 0-10V dimming functionality, connect **PINK** or **GREY** and **VIOLET** wires to a 0-10V dimming controller (optional).

