

# Introducing a New Hardwire Option for the UC120-LED Series



The **UC120 Wiring Compartment** allows direct wiring connections when installing UC120-LED series under cabinet lights instead of using a plug-in option.



Connect up to 400W per run.



Entries are for use with NMD90 14AWG and 3/8" cable clamp.



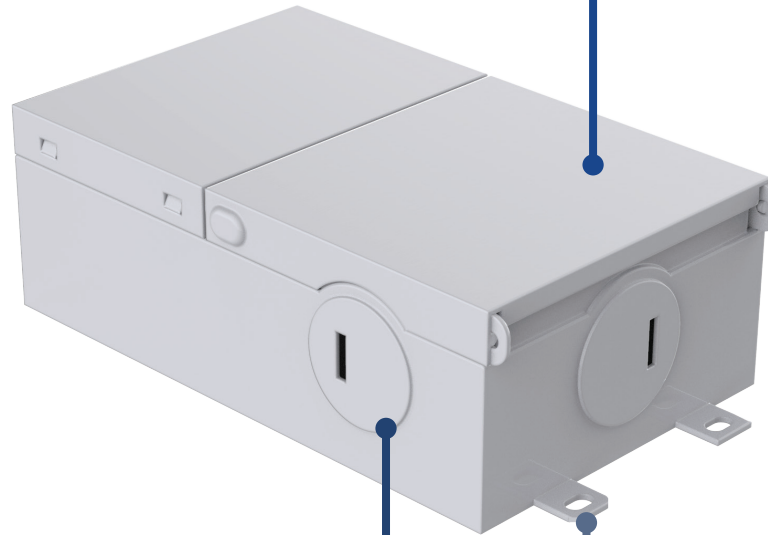
Interconnect cable to connect multiple compartments is available.



For more information, see detailed spec sheet at [rdalighting.com](http://rdalighting.com)

## Easy to open.

The compartment can be opened from the top for easy access.



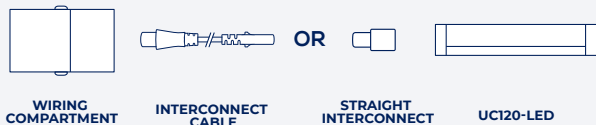
## One entry on each side.

The box has four entries to suit any wiring option.

## Mounting Tabs on Both Ends.

Can be mounted under a cabinet with four screws.

## How It Connects:



Compatible With:  
**UC120-LED Series**  
**Under Cabinet Lights**

