

The DVBKS100CG is a versatile vaporproof fixture with a natural aluminum finish. The DVBKS100CG is designed for mounting on a wall. The DVBKS100CG is made of die cast aluminum.



APPLICATIONS

Ideal for industrial and commercial applications.

Project	
Type	
Date	
Notes	

SPECIFICATIONS

Box

Precision die cast aluminum with four 1/2" NPT plugs installed and one open 1/2" threaded conduit opening on the top. One brass ground screw installed.

Gasket

Silicone gasket between the wiring box and the fitter.

Arm

Precision die cast aluminum.

Fitter

Threaded Precision die cast aluminum with a silicone gasket.

Globe

Clear glass threaded. Replacement glass part is GL100.

Socket

Porcelain, medium base, 4KV pulse rated socket with a nickel-plated screw shell and a spring-loaded center contact.

Guard

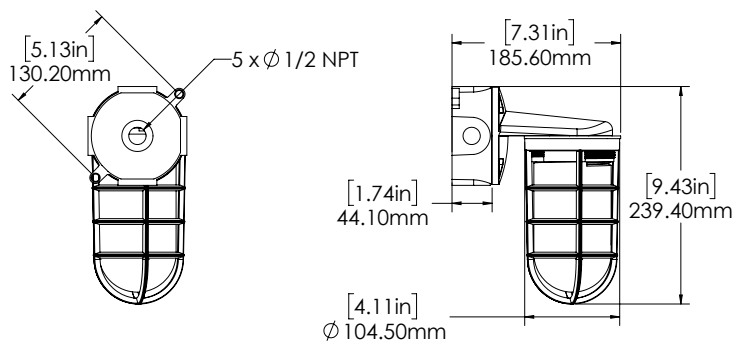
Threaded die cast aluminum with a set screw for locking the guard in place.

Hardware

All brass hardware.

Max Wattage	100 watts incandescent
Approval	cULus for wet locations
Lamp	Not included
Finish	Natural aluminum

DIMENSIONAL DATA



DVBKS100CG
Wall mount



OTHER MOUNTING OPTIONS



DVCBS100CG
Pendant mount



DVAKS100CG
Ceiling Mount

AVAILABLE OPTIONS (SOLD SEPARATELY)



The **DVBKS100CG** is also available as an LED fixture.

ORDERING GUIDE - FIXTURE

DVBKS100CG

ORDERING GUIDE - ACCESSORIES (SOLD SEPARATELY)

GLOOPR PRISMATIC GLASS

GL100F FROSTED GLASS

GL100 CLEAR GLASS

RGL100A (AMBER)

RGL100B (BLUE)

RGL100G (GREEN)

RGL100R (RED)

GL100PGO (POLYCARBONATE WHITE)

GD100CGS - GUARD

* Standard configuration