

The WRUD4 is an architectural, specification grade up-down light with advanced optics available in three sizes and custom color finishes.



### APPLICATIONS

**Ideal for perimeter lighting in retail buildings, atriums, condominiums and other architectural properties.**

<b>Project</b>	
<b>Type</b>	
<b>Date</b>	
<b>Notes</b>	

### SPECIFICATIONS

#### Construction

WRUD4 has an extruded aluminum housing with a powder coat paint finish. The fixture has a clear tempered glass lens which is held in place with a gasket and three stainless steel screws making it approved for wet locations.

#### Mounting

The fixture can be mounted directly on to the wall and has an easy mounting system. The galvanized steel plate is attached to the wall with 4 screws. The fixture then slides under the two pins and is secured by the two set screws at the bottom.

#### Optics

The fixture has a standard color temperature of 5000K, 4000K and 3000K are available as options. The fixture is available with a narrow, medium, wide or extra wide beam.

#### Electrical

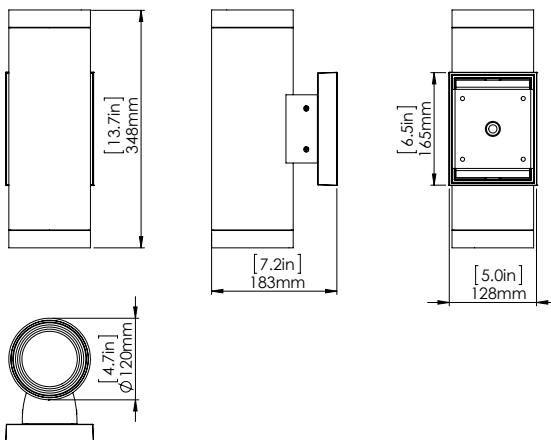
The standard unit has a high efficiency driver that operates at 120-277V.

#### Finish

Custom colors available.

<b>Diameter</b>	<b>4.7"</b>
<b>Watts</b>	<b>28W</b>
<b>Lumens</b>	<b>2892</b>
<b>Efficacy</b>	<b>105 lumens/watt</b>
<b>Operating Temp</b>	<b>-40°C to +40°C</b>
<b>LED Life</b>	<b>100,000 hours</b>
<b>Color Temp.</b>	<b>5000K (standard), 4000K, 3000K (option)</b>
<b>Warranty</b>	<b>5 Years</b>
<b>Certification</b>	<b>Approved to uL/CSA standards</b>
<b>Power Factor</b>	<b>0.98</b>
<b>CCT</b>	<b>&gt;80</b>
<b>Total Harmonic Distortion</b>	<b>&lt;20%</b>

### DIMENSIONS



Diffusion lens

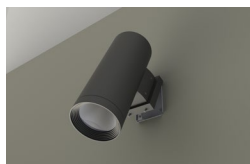


EASY INSTALLATION

Step 1: Attach steel plate on the wall with 4 screws



Step 2: Slide fixture under the two pins till it locks in



Step 3: Secure with 2 set screws on the bottom



ORDERING GUIDE



VOLTAGE	COLOR TEMP	BEAM	FINISH
B - 120 - 277V*	5K - 5000K* 4K - 4000K 3K - 3000K	N - NARROW M - MEDIUM W - WIDE X - EXTRA WIDE	SBK - SANDTEX BLACK* CC - CUSTOM COLOUR (PLEASE SPECIFY)

\* Standard configuration