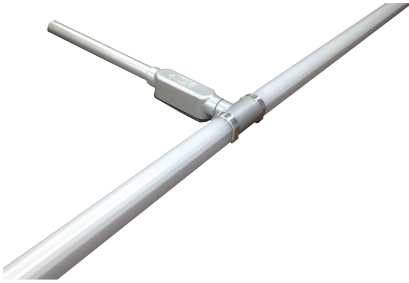


The RD-L8 fixture is a highly versatile sign light available in lengths of 2' - 8' that can be combined to form a continuous run.



APPLICATIONS

Ideal for sign lighting and wall washing applications

Project	
Type	
Date	
Notes	

SPECIFICATIONS

Construction

The RD-L8 is made from extruded aluminum with die cast mounting hardware. Fixture has a clear downlight lens and translucent casing that can be rotated 360° allowing you to direct light in any direction. Fixture has two supplied end caps connected to arms for mounting on to the wall. Standard arm is constructed from aluminum and extends 18" from the wall. Multiple fixtures can be combined for large applications using dust and watertight connectors. Each fixture uses its own power supply.

Electrical

The standard unit has a high efficiency dimmable driver that operates at 120 - 277V.

Finish

Standard finish is natural aluminum in PC housing.

LED configuration

High quality samsung Mid Power LEDs are used to provide even illumination and maintain brightness in cold weather conditions. Standard color temperature is 4000K and lumen output is a 4,266 per 4' section

Options

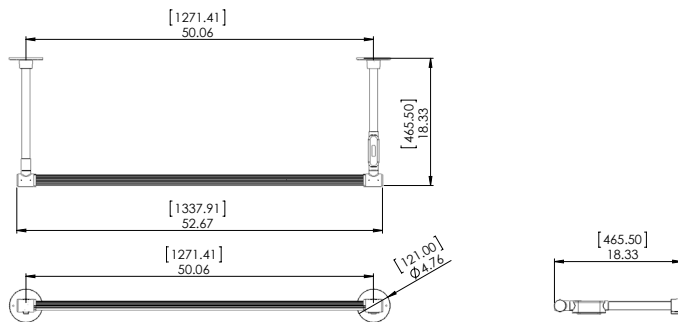
- Mounting box for roof mount applications.

Consult Customer Service for continuous run applications.

Watts	44W per 4' section
Lumens	4,266 per 4' section
Efficacy	97.3 lumens per watt

Voltage	120-277V
Operating Temperature	-40°C to +40°C
Certification	Approved to UL/CSA standards
LED Life	100,000 hours
Color Temperature	4000K
Warranty	5 years
Power Factor	.98
CRI	min. 80
Total Harmonic Distortion	under 20 %

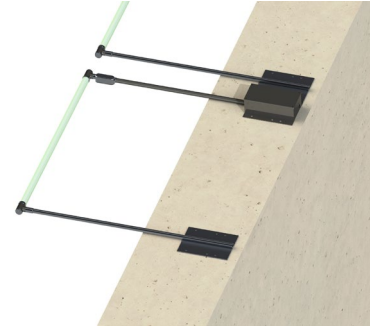
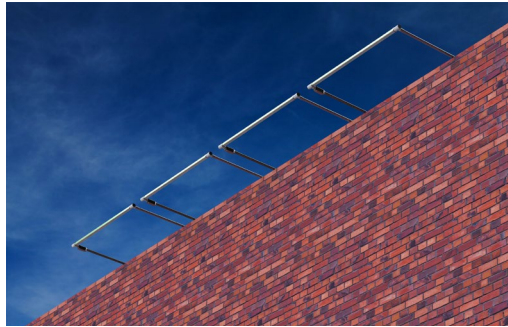
DIMENSIONS



NOTE: DIMENSIONS IN SQUARE BRACKETS ARE IN MILLIMETERS



Installation image



Parapet mount

Parapet mount Top view

ORDERING GUIDE

RD-L8	-		-		-		-		
		1X2		LED20		VOLTAGE		COLOR TEMP	
		1X4		LED40		B - 120 - 277V*		4K - 4000K*	
		1X6		LED60				FINISH	
		1X8		LED80				NAT - Natural Aluminum in PC housing*	
<hr/>									
		2X4		LED80					
		2X6		LED120					
		2X8		LED160					
<hr/>									
		4+6		LED100					
		4+8		LED120					
		6+8		LED140					

* Standard configuration

In column 2 of the Ordering Guide:

2X6 represents 2 sections of 6' fixtures combined together

4+6 represents a 4' fixture combined with a 6' fixture