

The AL-LED fixtures are high efficiency area lights with multiple beam patterns to suit a variety of applications. Intelligently designed, this series of fixtures provides superior lighting performance and significant energy savings over traditional fixtures



AL2-LED

APPLICATIONS

Ideal for parking lots, roadways and perimeter lighting applications

Project	
Type	
Date	
Notes	

SPECIFICATIONS

Construction

Precision die cast aluminum housing with clear polycarbonate lens. The fixture offers superior heat sinking with air-flow fins on the top. The driver enclosure is separate from the optics for improved thermal management.

Optics

Unit has high efficiency injection molded optics that have an efficacy of over 100 lumens/watt. The LEDs have a color temperature of 5000K as standard. 4000K or 3000K available as option. The CRI is greater than 70 and the operating temperature range is -40°C - to +40°C. LED life of 100,000 hours.

Beam Distribution

Available in T2, T3, T4 and T5 beam patterns for a wide range of applications.

Mounting

Standard unit is designed for standard 2-3/8" diameter pole mounting as a slip fitter. Unit can also be wall mounted using a custom designed Wall Mount bracket. Additional mounting options include 6" / 12" arms for square poles, 6" arm for round poles. Arms can also be designed with a custom designed radial cut for round poles. Bullhorn brackets also available.

Electrical

The standard unit has a high efficiency dimmable driver that operates at 120 - 277V. Driver has 0-10V dimming control.

Finish

Standard finish is Bronze. Please consult factory for custom color..

Options

Photocell

AL1-LED Series

Input Watts	64.9W
Lumens	7,312
Efficiency	112 lumens per watt

Input Watts	99.5W
Lumens	10,688
Efficiency	107 lumens per watt

Input Watts	117.4W
Lumens	12,537
Efficiency	107 lumens per watt

AL2-LED Series

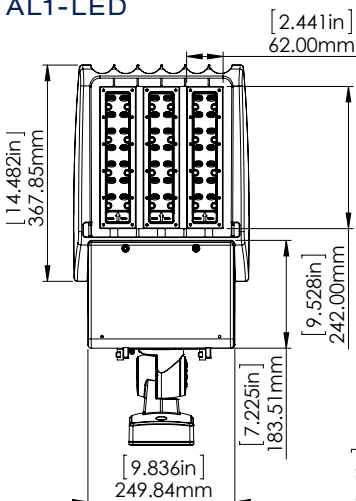
Input Watts	148.5W
Lumens	16,245
Efficiency	109 lumens per watt

Input Watts	192.1W
Lumens	21,641
Efficiency	112 lumens per watt

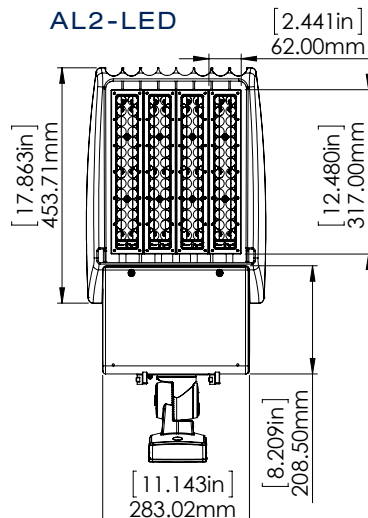
Input Watts	245W
Lumens	27,092
Efficiency	110 lumens per watt

DIMENSIONS

AL1-LED



AL2-LED



MOUNTING OPTIONS



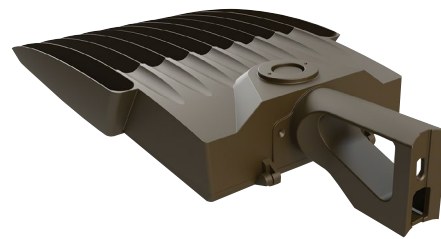
Slipfit Mount
Optional - order separately



Wall Mount Bracket
Optional - order separately



Arm for square pole (available in 6"/12")
Radial Cut Arm for a round pole (available in 6"/12")
Optional - order separately



Arm for round pole (available in 6"/12")
Optional - order separately

ORDERING GUIDE

AL	-	-	-	-	-	-	-
	WATTS	VOLTAGE	COLOR TEMP	DIST.	FINISH	DRIVER	OPTIONS
AL1	LED60* LED90* LED120*	B - 120 - 277V* A - 120V	5K - 5000K* 4K - 4000K 3K - 3000K	T2 - TYPE 2 T3 - TYPE 3 T4 - TYPE 4 T5 - TYPE 5	BRZ - BRONZE* CC - CUSTOM COLOUR	DIM - DIMMABLE DRIVER*	PC - Photocell
AL2	LED150* LED200* LED250*						

* Standard configuration

** All mounting configurations sold separately. Consult Customer Service.